



RESIDENTIAL ESTATE AGENTS  
PROPERTY LETTING & MANAGING AGENTS  
VALUERS & PROPERTY CONSULTANTS  
CHARTERED SURVEYORS

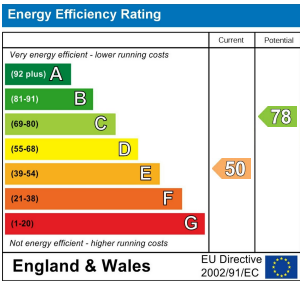
**01722 336422**  
[www.hwwhite.co.uk](http://www.hwwhite.co.uk) WEB



**Churchfields Road,**

**£775 PCM**

**Flat 5, 43 Churchfields Road, Salisbury, Wiltshire, SP2 7NW**



**Description**

Situated on the second floor, this well-presented one-bedroom flat offers convenient living with easy access to local amenities and transport links. The property is accessed via a communal entrance and hallway leading up to the flat's entrance. Inside, the accommodation comprises an entrance hall, a fitted kitchen with an electric hob and oven, and space for a washing machine. There is a good-sized double bedroom, a bathroom, and a well-proportioned sitting room providing comfortable living space. Additional features include electric heating, access to a communal paved garden, and eligibility for a residents' street parking permit. The property is offered unfurnished.

**A Note From the Whites Letting Team**

Thank you for considering Whites as your letting agent. As a proud member of the Royal Institution of Chartered Surveyors (RICS), we aspire to uphold its core values by providing a fair, efficient, and transparent service for all prospective tenants. Below we've outlined how we manage property enquiries and applications to help set expectations and guide you through the letting application process.

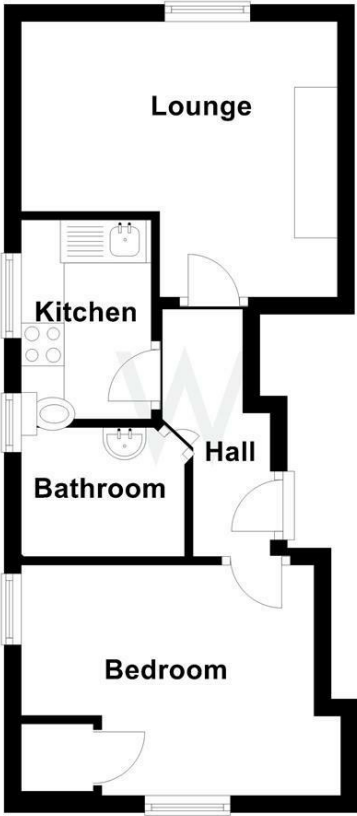
To begin the process of enquiring about one of our properties, please click the 'Request Further Details/Info' button on the property listing. This will send us your contact information, and we'll get back to you as soon as possible with a short questionnaire to complete. Once we've received your completed questionnaire, your enquiry will be registered with the relevant Property Manager. Please note, only those who complete this step will be considered as having formally enquired about the property.

Due to the high level of interest we often receive and arrange viewings in groups of up to 10 people. To manage expectations, we may also temporarily pause viewings if necessary.

Please note that applications are not decided on their merits by us, in conjunction with the landlord.

The availability date listed is provisional and we reserve the right to change it without notice.

**Second Floor**  
Approx. 29.9 sq. metres (321.6 sq. feet)



We will handle enquiries in the order they are received. Viewings may be scheduled. To manage expectations, we will respond accordingly. All applications will be carefully considered.

Total area: approx. 29.9 sq. metres (321.6 sq. feet)



01722 336422